



www.apevibro.com

# SERVICE BULLETIN

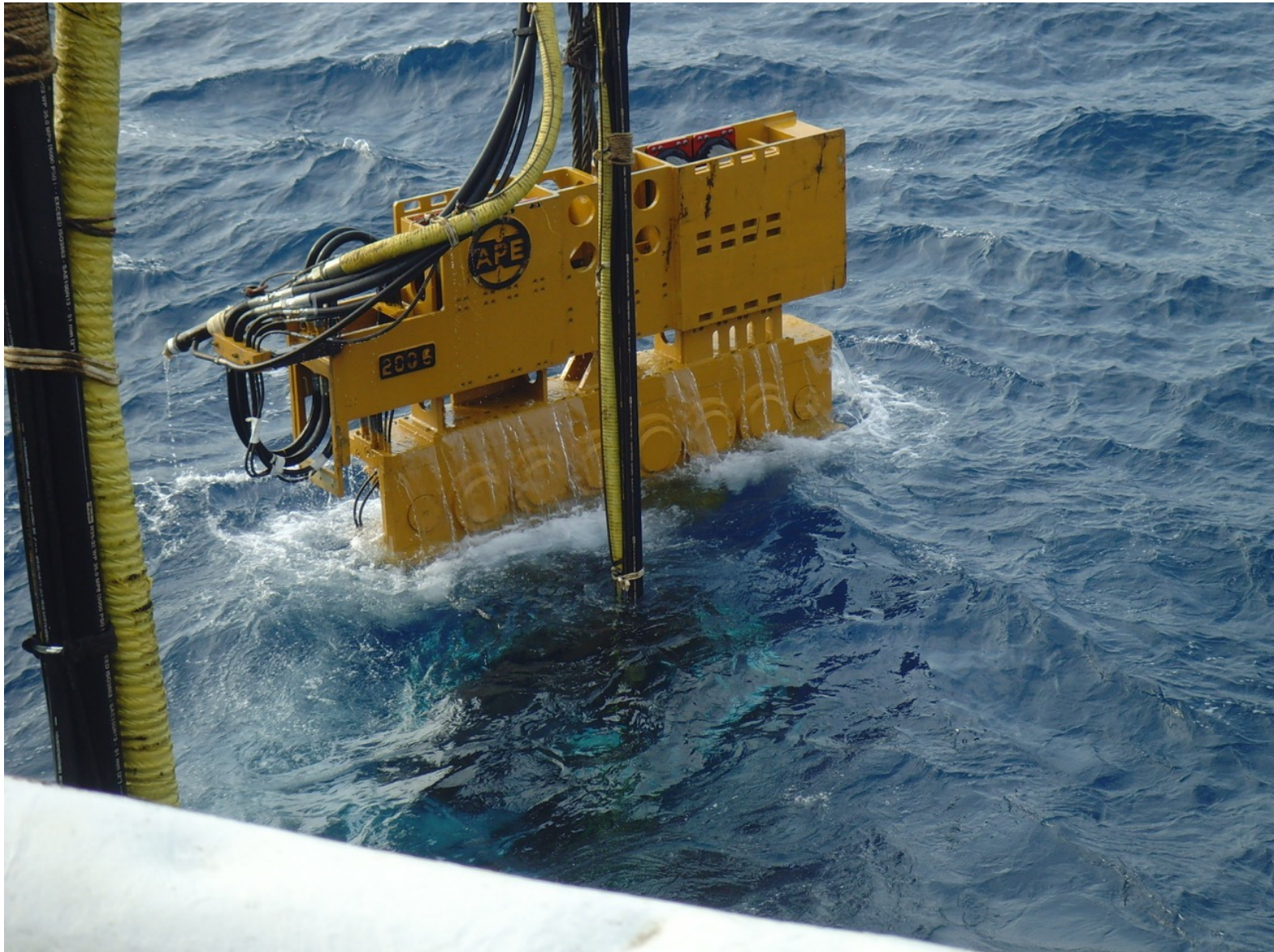
VIBRATORY HAMMERS • POWER UNITS/AUGER SYSTEMS • DIESEL & HYDRAULIC HAMMERS  
DRILL RIGS • HYDRAULIC PILING RIGS • WICK DRAIN INSTALLERS • LEAD SYSTEMS



www.jandm-usa.com

## #37 Directions On Running An APE Vibro Under Water

There are uncommon jobs that require a vibro to be ran under water. This document is going to cover what tasks need to be completed to achieve this goal.



### APE HEADQUARTERS

7032 S 196TH STREET  
KENT, WA 98032  
(800) 248-8498 • (253) 872-0141  
FAX (253) 872-8710

### NORTHEAST REGIONAL OFFICE

401 HARTLE ST.  
SAYREVILLE, NJ 08872  
(888) 217-7524 • (732) 432-6604  
FAX (732) 432-6608

### APE CHINA

BUILDING NO. 233, FU QIAO ROAD  
GU CUN INDUSTRIAL ZONE BAOSHAN DISTRICT  
SHANGHAI, CHINA 201906  
011-86-21-5677-1221  
FAX 011-86-21-3604-0553

### LOUISIANA REGIONAL OFFICE

39266 A DOYLE DRIVE  
GONZALES, LA 70737  
(225) 644-7722  
FAX (225) 644-7626

### GULF REGIONAL OFFICE

3975 FM HWY 1485  
CONROE, TX 77306  
(800) 596-2877 • (936) 271-1044  
FAX (936) 271-1046

### MID-ATLANTIC REGIONAL OFFICE

500 NEWTON ROAD, #200  
VIRGINIA BEACH, VA 23462  
(866) 399-7500 • (757) 518-9740  
FAX (757) 518-9741

### SOUTHEAST REGIONAL OFFICE

1345 INDUSTRIAL PARK ROAD  
MULBERRY, FL 33860  
(800) 570-3844 • (863) 324-0378  
FAX (863) 318-9409

### MID-WESTERN REGIONAL OFFICE

50 GERBER INDUSTRIAL DR.  
ST. PETERS, MO 63376  
(877) 296-8044 • (636) 397-8400  
FAX (636) 278-4278

### WESTERN REGIONAL OFFICE

2985 LOOMIS ROAD  
STOCKTON, CA 95205  
(888) 245-4401 • (209) 942-2166  
FAX (209) 942-2455



www.apevibro.com

# SERVICE BULLETIN

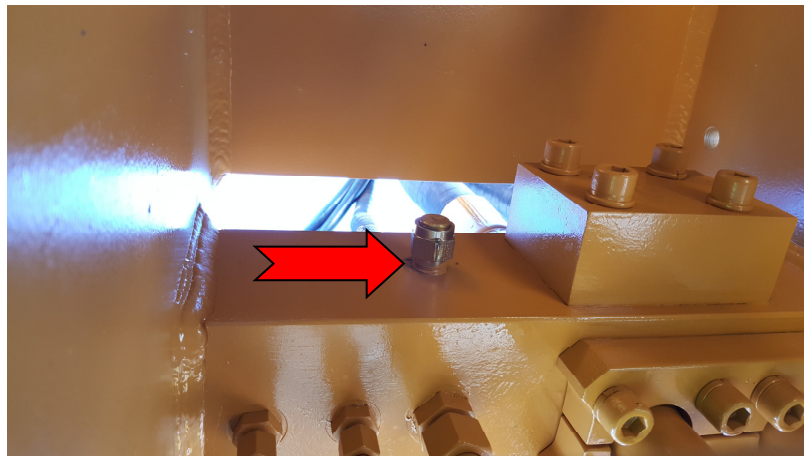
VIBRATORY HAMMERS • POWER UNITS/AUGER SYSTEMS • DIESEL & HYDRAULIC HAMMERS  
DRILL RIGS • HYDRAULIC PILING RIGS • WICK DRAIN INSTALLERS • LEAD SYSTEMS



www.jandm-usa.com

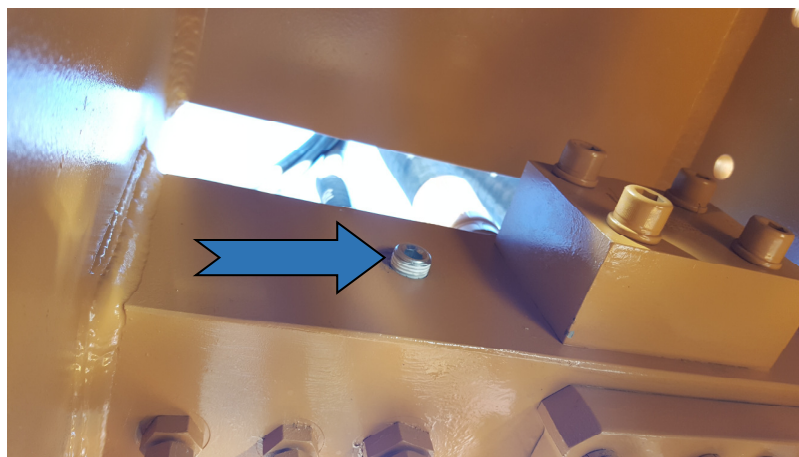
There are two topics that we will cover that effect two different areas of the vibro.

The first topic is the pop off valve. **(See IMG.1 RED ARROW)**



IMG.1

The pop off valve protects the hydraulic motor shaft seal for excessive case pressure. Our standard APE pop off vents to atmosphere at 55 P.S.I. The pop off needs to be removed and a ½” NPT plug with sealer installed in its place. **(See IMG.2 BLUE ARROW)**



IMG.2

**APE HEADQUARTERS**  
7032 S 196TH STREET  
KENT, WA 98032  
(800) 248-8498 • (253) 872-0141  
FAX (253) 872-8710

**NORTHEAST REGIONAL OFFICE**  
401 HARTLE ST.  
SAYREVILLE, NJ 08872  
(888) 217-7524 • (732) 432-6604  
FAX (732) 432-6608

**APE CHINA**  
BUILDING No. 233, FU QIAO ROAD  
GU CUN INDUSTRIAL ZONE BAOSHAN DISTRICT  
SHANGHAI, CHINA 201906  
011-86-21-5677-1221  
FAX 011-86-21-3604-0553

**LOUISIANA REGIONAL OFFICE**  
39266 A DOYLE DRIVE  
GONZALES, LA 70737  
(225) 644-7722  
FAX (225) 644-7626

**GULF REGIONAL OFFICE**  
3975 FM Hwy 1485  
CONROE, TX 77306  
(800) 596-2877 • (936) 271-1044  
FAX (936) 271-1046

**MID-ATLANTIC REGIONAL OFFICE**  
500 NEWTON ROAD, #200  
VIRGINIA BEACH, VA 23462  
(866) 399-7500 • (757) 518-9740  
FAX (757) 518-9741

**SOUTHEAST REGIONAL OFFICE**  
1345 INDUSTRIAL PARK ROAD  
MULBERRY, FL 33860  
(800) 570-3844 • (863) 324-0378  
FAX (863) 318-9409

**MID-WESTERN REGIONAL OFFICE**  
50 GERBER INDUSTRIAL DR.  
ST. PETERS, MO 63376  
(877) 296-8044 • (636) 397-8400  
FAX (636) 278-4278

**WESTERN REGIONAL OFFICE**  
2985 LOOMIS ROAD  
STOCKTON, CA 95205  
(888) 245-4401 • (209) 942-2166  
FAX (209) 942-2455



# SERVICE BULLETIN

VIBRATORY HAMMERS • POWER UNITS/AUGER SYSTEMS • DIESEL & HYDRAULIC HAMMERS  
DRILL RIGS • HYDRAULIC PILING RIGS • WICK DRAIN INSTALLERS • LEAD SYSTEMS



[www.apevibro.com](http://www.apevibro.com)

[www.jandm-usa.com](http://www.jandm-usa.com)

The pop off valve needs to be reinstalled in the case drain circuit to protect the motor shaft seal. Install it back by the power unit Q.D. with the appropriate fittings. (See **IMG.3 ORANGE ARROW**)



Topic one is now completed.

#### APE HEADQUARTERS

7032 S 196TH STREET  
KENT, WA 98032  
(800) 248-8498 • (253) 872-0141  
FAX (253) 872-8710

#### NORTHEAST REGIONAL OFFICE

401 HARTLE ST.  
SAYREVILLE, NJ 08872  
(888) 217-7524 • (732) 432-6604  
FAX (732) 432-6608

#### APE CHINA

BUILDING No. 233, FU QIAO ROAD  
GU CUN INDUSTRIAL ZONE BAOSHAN DISTRICT  
SHANGHAI, CHINA 201906  
011-86-21-5677-1221  
FAX 011-86-21-3604-0553

#### LOUISIANA REGIONAL OFFICE

39266 A DOYLE DRIVE  
GONZALES, LA 70737  
(225) 644-7722  
FAX (225) 644-7626

#### GULF REGIONAL OFFICE

3975 FM Hwy 1485  
CONROE, TX 77306  
(800) 596-2877 • (936) 271-1044  
FAX (936) 271-1046

#### MID-ATLANTIC REGIONAL OFFICE

500 NEWTON ROAD, #200  
VIRGINIA BEACH, VA 23462  
(866) 399-7500 • (757) 518-9740  
FAX (757) 518-9741

#### SOUTHEAST REGIONAL OFFICE

1345 INDUSTRIAL PARK ROAD  
MULBERRY, FL 33860  
(800) 570-3844 • (863) 324-0378  
FAX (863) 318-9409

#### MID-WESTERN REGIONAL OFFICE

50 GERBER INDUSTRIAL DR.  
ST. PETERS, MO 63376  
(877) 296-8044 • (636) 397-8400  
FAX (636) 278-4278

#### WESTERN REGIONAL OFFICE

2985 LOOMIS ROAD  
STOCKTON, CA 95205  
(888) 245-4401 • (209) 942-2166  
FAX (209) 942-2455



www.apevibro.com

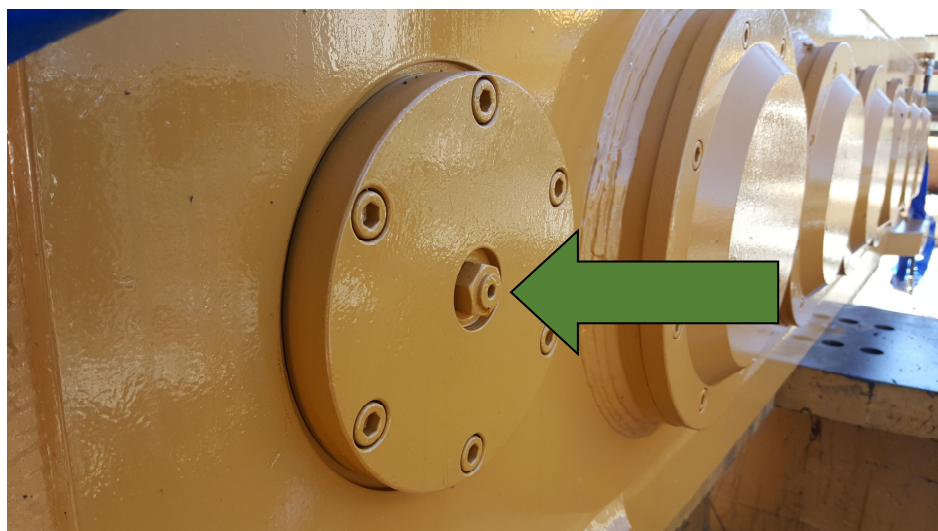
# SERVICE BULLETIN

VIBRATORY HAMMERS • POWER UNITS AUGER SYSTEMS • DIESEL & HYDRAULIC HAMMERS  
DRILL RIGS • HYDRAULIC PILING RIGS • WICK DRAIN INSTALLERS • LEAD SYSTEMS



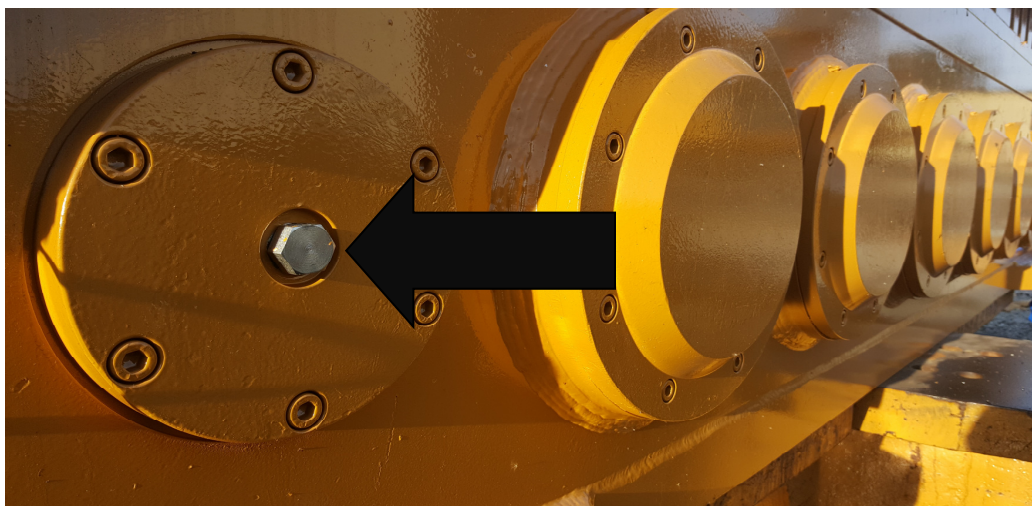
www.jandm-usa.com

Topic two is the gear box breather. (See **IMG.4 GREEN ARROW**)



**IMG.4**

The breather needs to be removed, and a Number 10 MORB plug installed in its place to seal the gearbox from water. (SEE **IMG.5 BLACK ARROW**)



**IMG.5**

**APE HEADQUARTERS**

7032 S 196TH STREET  
KENT, WA 98032  
(800) 248-8498 • (253) 872-0141  
FAX (253) 872-8710

**NORTHEAST REGIONAL OFFICE**

401 HARTLE ST.  
SAYREVILLE, NJ 08872  
(888) 217-7524 • (732) 432-6604  
FAX (732) 432-6608

**APE CHINA**

BUILDING NO. 233, FU QIAO ROAD  
GU CUN INDUSTRIAL ZONE BAOSHAN DISTRICT  
SHANGHAI, CHINA 201906  
011-86-21-5677-1221  
FAX 011-86-21-3604-0553

**LOUISIANA REGIONAL OFFICE**

39266 A DOYLE DRIVE  
GONZALES, LA 70737  
(225) 644-7722  
FAX (225) 644-7626

**GULF REGIONAL OFFICE**

3975 FM HWY 1485  
CONROE, TX 77306  
(800) 596-2877 • (936) 271-1044  
FAX (936) 271-1046

**MID-ATLANTIC REGIONAL OFFICE**

500 NEWTON ROAD, #200  
VIRGINIA BEACH, VA 23462  
(866) 399-7500 • (757) 518-9740  
FAX (757) 518-9741

**SOUTHEAST REGIONAL OFFICE**

1345 INDUSTRIAL PARK ROAD  
MULBERRY, FL 33860  
(800) 570-3844 • (863) 324-0378  
FAX (863) 318-9409

**MID-WESTERN REGIONAL OFFICE**

50 GERBER INDUSTRIAL DR.  
ST. PETERS, MO 63376  
(877) 296-8044 • (636) 397-8400  
FAX (636) 278-4278

**WESTERN REGIONAL OFFICE**

2985 LOOMIS ROAD  
STOCKTON, CA 95205  
(888) 245-4401 • (209) 942-2166  
FAX (209) 942-2455



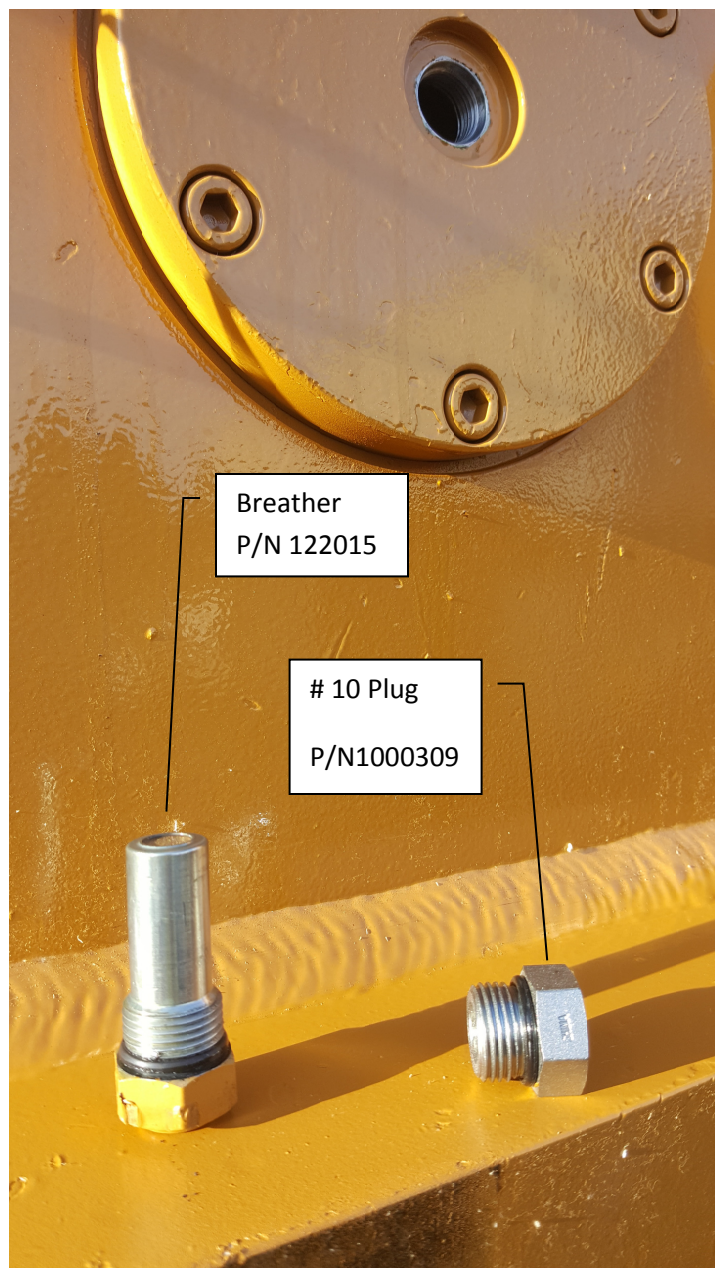
www.apevibro.com

# SERVICE BULLETIN

VIBRATORY HAMMERS • POWER UNITS AUGER SYSTEMS • DIESEL & HYDRAULIC HAMMERS  
 DRILL RIGS • HYDRAULIC PILING RIGS • WICK DRAIN INSTALLERS • LEAD SYSTEMS



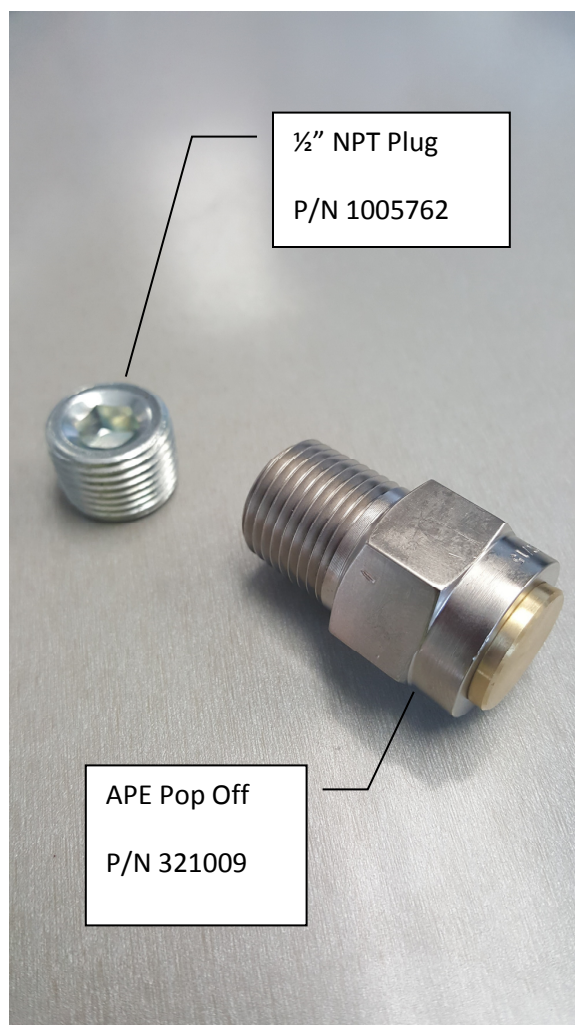
www.jandm-usa.com



Breather  
P/N 122015

# 10 Plug  
P/N1000309

The vibro is now ready to run under water to a max depth of 150'. If a job requires a vibro to drive deeper than 150' please contact your local salesmen for engineering assistance.



1/2" NPT Plug  
P/N 1005762

APE Pop Off  
P/N 321009

**APE HEADQUARTERS**  
 7032 S 196TH STREET  
 KENT, WA 98032  
 (800) 248-8498 • (253) 872-0141  
 Fax (253) 872-8710

**NORTHEAST REGIONAL OFFICE**  
 401 HARTLE ST.  
 SAYREVILLE, NJ 08872  
 (888) 217-7524 • (732) 432-6604  
 Fax (732) 432-6608

**APE CHINA**  
 BUILDING No. 233, FU QIAO ROAD  
 GU CUN INDUSTRIAL ZONE BAOSHAN DISTRICT  
 SHANGHAI, CHINA 201906  
 011-86-21-5677-1221  
 Fax 011-86-21-3604-0553

**LOUISIANA REGIONAL OFFICE**  
 39266 A DOYLE DRIVE  
 GONZALES, LA 70737  
 (225) 644-7722  
 Fax (225) 644-7626

**GULF REGIONAL OFFICE**  
 3975 FM Hwy 1485  
 CONROE, TX 77306  
 (800) 596-2877 • (936) 271-1044  
 Fax (936) 271-1046

**MID-ATLANTIC REGIONAL OFFICE**  
 500 NEWTON ROAD, #200  
 VIRGINIA BEACH, VA 23462  
 (866) 399-7500 • (757) 518-9740  
 Fax (757) 518-9741

**SOUTHEAST REGIONAL OFFICE**  
 1345 INDUSTRIAL PARK ROAD  
 MULBERRY, FL 33860  
 (800) 570-3844 • (863) 324-0378  
 Fax (863) 318-9409

**MID-WESTERN REGIONAL OFFICE**  
 50 GERBER INDUSTRIAL DR.  
 ST. PETERS, MO 63376  
 (877) 296-8044 • (636) 397-8400  
 Fax (636) 278-4278

**WESTERN REGIONAL OFFICE**  
 2985 LOOMIS ROAD  
 STOCKTON, CA 95205  
 (888) 245-4401 • (209) 942-2166  
 Fax (209) 942-2455