



# SERVICE BULLETIN

VIBRATORY HAMMERS • POWER UNITS/AUGER SYSTEMS • DIESEL & HYDRAULIC HAMMERS  
DRILL RIGS • HYDRAULIC PILING RIGS • WICK DRAIN INSTALLERS • LEAD SYSTEMS

Jun. 18, 2015



www.apevibro.com

www.jandm-usa.com

## #20 New Variable Moment Relief/Flow Valves

This bulletin will be addressing the new relief valve and flow valve settings for our variable moment equipment. We have confirmed that our current pressure settings are too high. A full rotation of the phase actuator does not require as high of a pressure setting that we are currently using. Therefore we have reduced the pressure settings in expectation that the life of the components will be extended. These new valves will work on all existing V.M. power units and vibros in our fleet. There are three new valves to change; two in the power unit and one on the vibro.

### Power Unit Valve Change

We will replace the old relief valve with the new one in location 2. The relief valve is located on the VM manifold inside of the Power Unit. (See IMG.1)

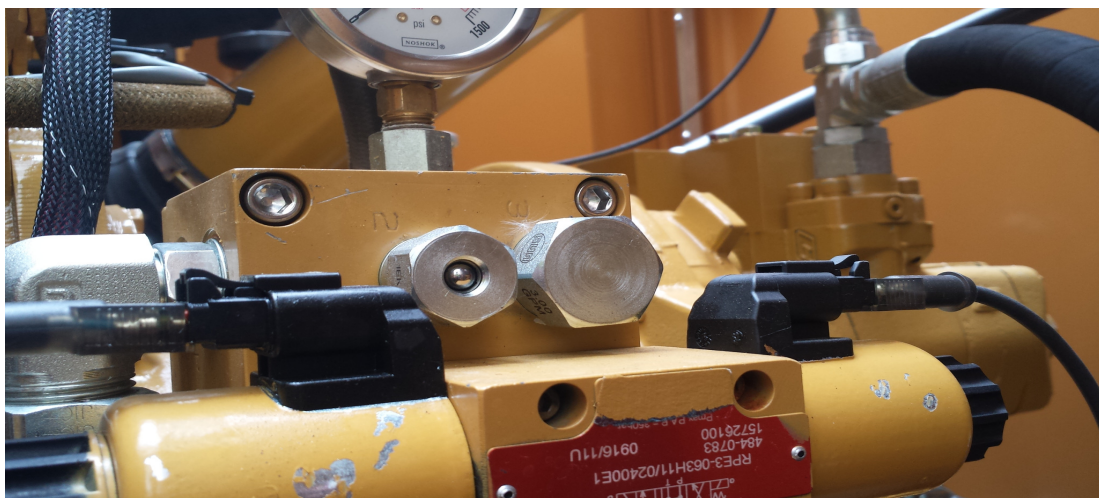
\*This new relief is set at 700 P.S.I. and is nonadjustable.

1002469      SUN Cartridge-B506 179 B01      \*Preset @ 700PSI

We will also replace the old flow valve with the new one. The Flow valve is located in location 3. (See IMG.1)

\*This valve is set at 3 G.P.M and is nonadjustable.

1002453      SUN-Flow Control Valv-FCDBXAN      3.00GPM-non-adj version      **IMG.1**



**APE HEADQUARTERS**  
7032 S 196TH STREET  
KENT, WA 98032  
(800) 248-8498 • (253) 872-0141  
Fax (253) 872-8710

**NORTHEAST REGIONAL OFFICE**  
401 HARTLE ST.  
SAYREVILLE, NJ 08872  
(888) 217-7524 • (732) 432-6604  
Fax (732) 432-6608

**APE CHINA**  
BUILDING No. 233, FU QIAO ROAD  
GU CUN INDUSTRIAL ZONE BAOSHAN DISTRICT  
SHANGHAI, CHINA 201906  
011-86-21-5677-1221  
Fax 011-86-21-3604-0553

**LOUISIANA REGIONAL OFFICE**  
39266 A DOYLE DRIVE  
GONZALES, LA 70737  
(225) 644-7722  
Fax (225) 644-7626

**GULF REGIONAL OFFICE**  
3975 FM Hwy 1485  
CONROE, TX 77306  
(800) 596-2877 • (936) 271-1044  
Fax (936) 271-1046

**MID-ATLANTIC REGIONAL OFFICE**  
500 NEWTON ROAD, #200  
VIRGINIA BEACH, VA 23462  
(866) 399-7500 • (757) 518-9740  
Fax (757) 518-9741

**SOUTHEAST REGIONAL OFFICE**  
1345 INDUSTRIAL PARK ROAD  
MULBERRY, FL 33860  
(800) 570-3844 • (863) 324-0378  
Fax (863) 318-9409

**MID-WESTERN REGIONAL OFFICE**  
50 GERBER INDUSTRIAL DR.  
ST. PETERS, MO 63376  
(877) 296-8044 • (636) 397-8400  
Fax (636) 278-4278

**WESTERN REGIONAL OFFICE**  
2985 LOOMIS ROAD  
STOCKTON, CA 95205  
(888) 245-4401 • (209) 942-2166  
Fax (209) 942-2455



www.apevibro.com

# SERVICE BULLETIN

VIBRATORY HAMMERS • POWER UNITS/AUGER SYSTEMS • DIESEL & HYDRAULIC HAMMERS  
DRILL RIGS • HYDRAULIC PILING RIGS • WICK DRAIN INSTALLERS • LEAD SYSTEMS



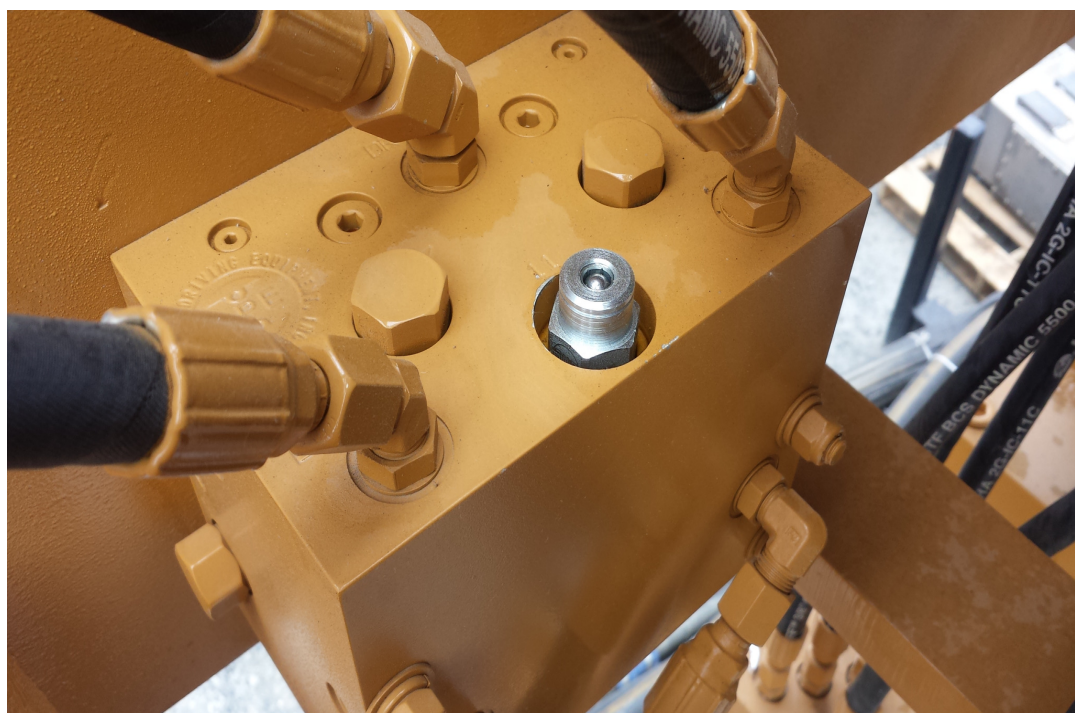
www.jandm-usa.com

## Vibro Valve Change

Finally, we will replace the old vibro relief valve with the new one. The purpose if this valve is to protect the phase actuator from high pressure caused from thermal expansion. If oil pressure exceeds 750 PSI it will relieve into the case drain. The valve is located on the manifold on the outer suppressor. (See IMG.2)

\*The new vibro relief valve is set at 750 PSI and is nonadjustable.

1002451      SUN-Pilot Relief Valv-750PSI      B506 179 B01-non-adj @ 750psi      **IMG.2**



### **APE HEADQUARTERS**

7032 S 196TH STREET  
KENT, WA 98032  
(800) 248-8498 • (253) 872-0141  
FAX (253) 872-8710

### **NORTHEAST REGIONAL OFFICE**

401 HARTLE ST.  
SAYREVILLE, NJ 08872  
(888) 217-7524 • (732) 432-6604  
FAX (732) 432-6608

### **APE CHINA**

BUILDING NO. 233, FU QIAO ROAD  
GU CUN INDUSTRIAL ZONE BAOSHAN DISTRICT  
SHANGHAI, CHINA 201906  
011-86-21-5677-1221  
FAX 011-86-21-3604-0553

### **LOUISIANA REGIONAL OFFICE**

39266 A DOYLE DRIVE  
GONZALES, LA 70737  
(225) 644-7722  
FAX (225) 644-7626

### **GULF REGIONAL OFFICE**

3975 FM Hwy 1485  
CONROE, TX 77306  
(800) 596-2877 • (936) 271-1044  
FAX (936) 271-1046

### **MID-ATLANTIC REGIONAL OFFICE**

500 NEWTON ROAD, #200  
VIRGINIA BEACH, VA 23462  
(866) 399-7500 • (757) 518-9740  
FAX (757) 518-9741

### **SOUTHEAST REGIONAL OFFICE**

1345 INDUSTRIAL PARK ROAD  
MULBERRY, FL 33860  
(800) 570-3844 • (863) 324-0378  
FAX (863) 318-9409

### **MID-WESTERN REGIONAL OFFICE**

50 GERBER INDUSTRIAL DR.  
ST. PETERS, MO 63376  
(877) 296-8044 • (636) 397-8400  
FAX (636) 278-4278

### **WESTERN REGIONAL OFFICE**

2985 LOOMIS ROAD  
STOCKTON, CA 95205  
(888) 245-4401 • (209) 942-2166  
FAX (209) 942-2455