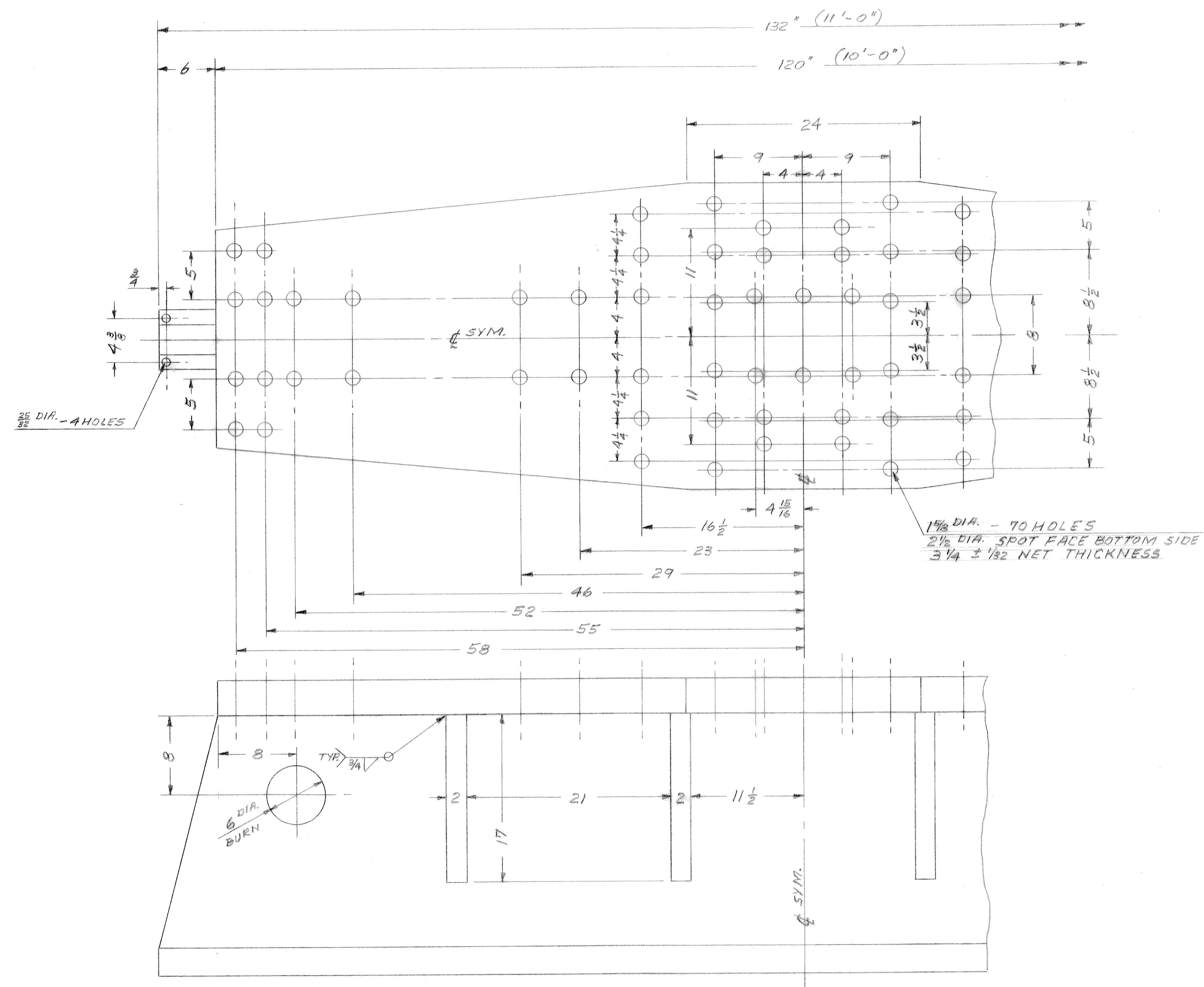


NOTE: 3" WEB PLATE TO BE FLAT WITHIN $\pm 1/32$
MACHINED FOOT TO BE CENTERED
ON 3" WEB PLATE



NOTES: 1.) WELD PER AWS
2.) STRESS REL. AFTER WELDING

A.P.E., INC. KENT, WA.		
SCALE: 3/16	APPROVED BY:	DRAWN BY: <i>W.L.</i>
DATE: 12/19/02		REVISED:
11 FT. CROSS CAISSON BEAM		
# 400 & 600 VIBRO		DRAWING NUMBER D1202-005